



A REAL HOME FROM HOME

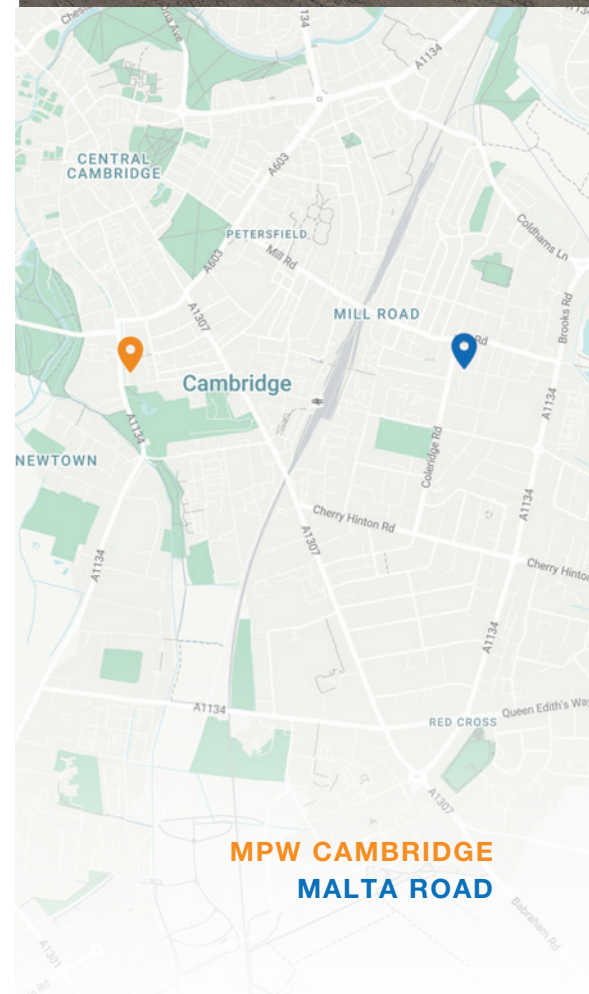
Malta Road sits in the heart of one of Cambridge's most desirable areas.

Comprising five attractive terraced houses next door to our Beechwood House residence, Malta Road is designed for students aged 17 who are looking for a great independent student living option.

Beautifully finished and with a real feeling of home, Malta Road is very popular with returning students who often book together after making friends in their first year.

LOCATION

Malta Road is just around the corner from Mill Road, which is full of independent shops, cafes and restaurants, with MPW Cambridge a comfortable walk away. Venture a little further, and you will find all of the attractions that Cambridge city centre has to offer.



MPW CAMBRIDGE
MALTA ROAD

ROOM OPTIONS

Prices from £14,995 to £18,750

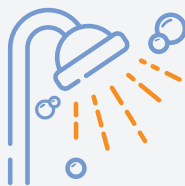
Small standard rooms include:



Single bed



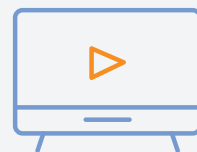
Study area with desk, bookshelf, wardrobe and drawers



Shared bathroom, with no more than two students per bathroom



Cleaning service – weekly room cleaning and bed linen change

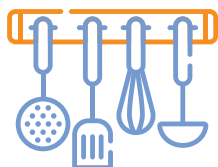


Lounge area with sofa and flat screen TV

FEATURES



Comfortable rooms with desks and storage



Stylish kitchens and bathrooms



Gardens with bike storage, wifi and breakfast included

Standard rooms include:



As above, but with a double bed in a larger room

En-suite rooms include:



As per standard rooms, plus a fully equipped en-suite bathroom



DISCOVER MORE

For further information and to take a virtual tour, visit the KSS website. Spaces are limited and demand is high, so contact us now to reserve your room.

www.kss.co.uk

